

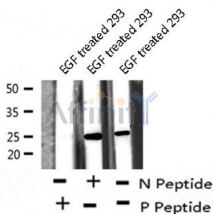
Bim (Phospho-Thr56/116) Ab

Cat.#: AF8247
 Size: 50ul,100ul,200ul

Concn.: 1mg/ml
 Source: Rabbit

Mol.Wt.: 25kDa,22kDa
 Clonality: Polyclonal

- Application:** WB 1:1000-3000
- Reactivity:** Human,Mouse,Rat
- Purification:** The Ab is from purified rabbit serum by affinity purification via sequential chromatography on phospho- and non-phospho-peptide affinity columns.
- Specificity:** Bim (Phospho-Thr56/116) Ab detects endogenous levels of Bim only when phosphorylated at Thr56/116
- Immunogen:** A synthesized peptide derived from human Bim (Phospho-Thr56/116)
- Uniprot:** O43521
- Subcellular Location:** Mitochondrion and Endomembrane system. Associated with intracytoplasmic membranes.
- Tissue Specificity:** Isoform BimEL, isoform BimL and isoform BimS are the predominant isoforms and are widely expressed with tissue-specific variation. Isoform Bim-gamma is most abundantly expressed in small intestine and colon, and in lower levels in spleen, prostate, testis, heart, liver and kidney.
- Similarity:** The BH3 motif is required for interaction with Bcl-2 proteins and cytotoxicity.Belongs to the Bcl-2 family.
- Storage Condition and Buffer:** Rabbit IgG in phosphate buffered saline , pH 7.4, 150mM NaCl, 0.02% sodium azide and 50% glycerol.Store at -20 °C.Stable for 12 months from date of receipt



Western blot analysis Bim (Phospho-Thr56/116) using EGF treated 293 whole cell lysates

IMPORTANT: For western blot, incubate membrane with diluted Ab in 5% w/v milk , 1X TBS, 0.1% Tween@20 at 4°C with gentle shaking, overnight.



Affinity Biosciences

website:www.affbiotech.com

order:order@affbiotech.com

For Research Use Only. Not for use in diagnostic and therapeutic procedures. Not for resale without express authorization.